

Gianni TARTARI, Water Research Institute, Italy & Ev-K2-CNR Committee, Italy  
 Kenichi UENO, Shiori SUGIMOTO, University of Tsukuba, Japan



South Col AWS real time data website:  
[www.share-everest.com](http://www.share-everest.com)

## The installation

On March 15, 2008, thanks to the exceptional efforts of a skilled team of Italian and Nepali climbers, the highest Automatic Weather Station (AWS) in the world, located at South-Col (SC) of the Mt. Everest (7,896 m a.s.l.) has been installed. This station, is part of the monitoring network of SHARE (Stations at High Altitude for Research on the Environment) Project. In the same period (May 13), the Kala Patthar AWS had been installed at an altitude of 5,585 m a.s.l.

## Aims

In this poster are analyzed the data collected from South Col and Kala Patthar AWSs during the first 3-8 months of monitoring to detect intra-seasonal variability and evolution of local-to-large scale atmosphere circulations.

## Instrumentation

In both sites, the stations are equipped with sensors for the continuous measurements, with an acquisition frequency of ten minutes, of air temperature ( $^{\circ}\text{C}$ ), relative humidity (%), atmospheric pressure (hPa), wind speed ( $\text{m s}^{-1}$ ) and direction ( $^{\circ}$ ), global solar radiation ( $\text{W m}^{-2}$ ) and UVA radiation ( $\text{W m}^{-2}$ ) according to Da Polenza et al. (2009).

## Results

Data recorded during the first months of measurement have shown a mean atmospheric pressure value of 381 hPa, westerly prevailing winds and very low humidity, especially during the night time hours. Minimum temperature reached has been  $-22.4^{\circ}\text{C}$  and the maximum wind speed was  $118 \text{ km h}^{-1}$ . The first data analysis shows that wind direction was limited in west-east direction at SC and westerly wind prevailed at KP, indicating that surface wind measurements are strongly affected by the micro-topography near the AWSs. Time sequence of wind speed showed sub-monthly variability at SC and evident diurnal changes at KP. At the SC, strong westerlies weakened after the monsoon onset (June), and intra-seasonal sporadic strong easterlies prevailed by the synoptic scale circulations. On the other side, daytime increase of westerly wind speed prevailed during all period at KP.

During May - August 2008 at SC has been registered an increase of specific humidity more than  $5 \text{ g kg}^{-1}$  corresponding with weakening of wind speed, indicating the cloud development over 8,000 m a.s.l. Absolute humidity was not calculated at KP due to uncertainty of relative humidity with lack of pressure data, and we could not confirm step-wise monsoon onset at high elevation which would accompany with altitudinal differences in moisture intrusion from the south. These measurements will be improved in future.

## Discussion

Diurnal variation of solar radiation confirmed that daytime clouds are more frequently develop at KP than at SC, especially after June, and global solar radiation at SC was greater than at KP. In that period the sensor recorded also an increase of daytime air temperature at SC, when the wind speed was weakening at SC.

Comparison of the AWSs data with re-analysis data showed good consistency in the pressure and wind-speed data but also showed some discrepancies in the humidity and diurnal changes of temperatures. To know better the intra-seasonal variability, evolution of local-to-large scale atmosphere circulations and to have a global vision on the climatic changes will be necessary to evaluate these preliminary data with the data recorded in the following months.

## Conclusion

Thanks to station located at 8,000 a.s.l, SHARE AWSs network is covering from 2,500 to 8,000 m of altitude with 6 sites in the CEOP-Himalayas reference site (Khumbu Valley, Nepal), thus providing an excellent dataset to monitor the evidences of water and energy circulations crossing over the world most complex terrains (Ueno et al. 2009).

## Reference

Da Polenza A., E. Vuillermoz, G.P. Verza & A. Cortinovis. 2009. SHARE Everest, the highest (8,000 m a.s.l) Automatic Weather Station of the world: South Col, Mt. Everest, Nepal. Technical characteristics and preliminary results. GEWEX/iLEAPS Science Conference. Progress in Land-Atmosphere Interaction and Climate Change. High Elevations Poster Session.

Ueno, K., G. Tartari, R. Toffolon, E. Manfredi & E. Vuillermoz. 2009. CEOP-High Elevations: Present status and future scenarios. GEWEX/iLEAPS Science Conference. Progress in Land-Atmosphere Interaction and Climate Change. High Elevations Poster Session.



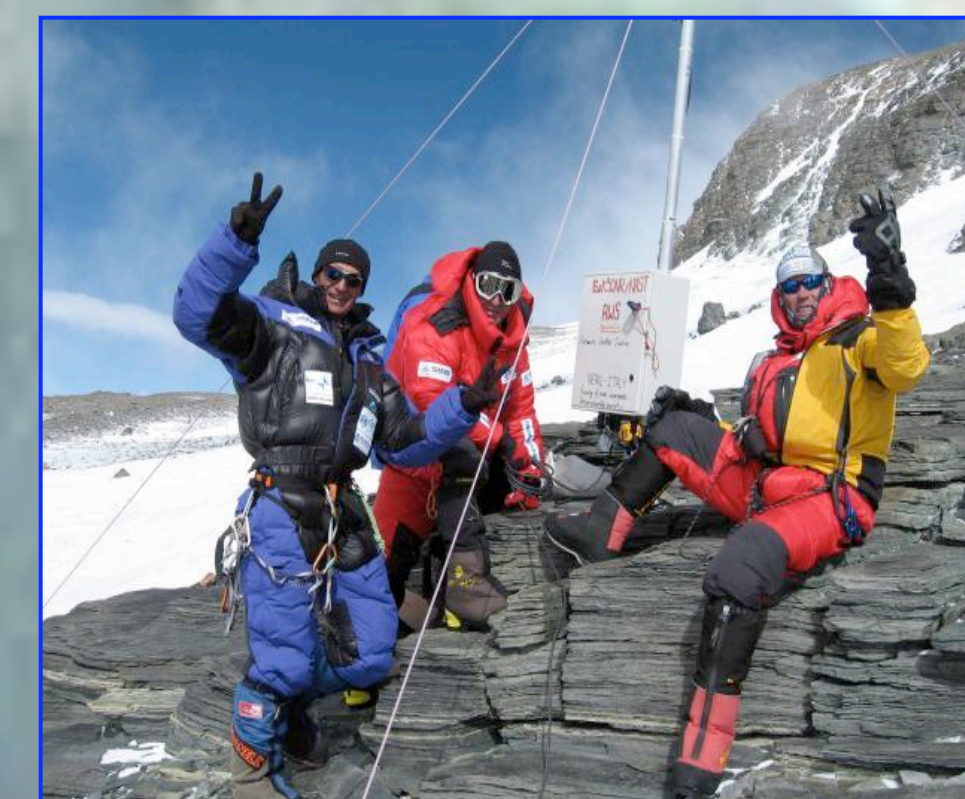
South Col AWS (7,986 m a.s.l.)



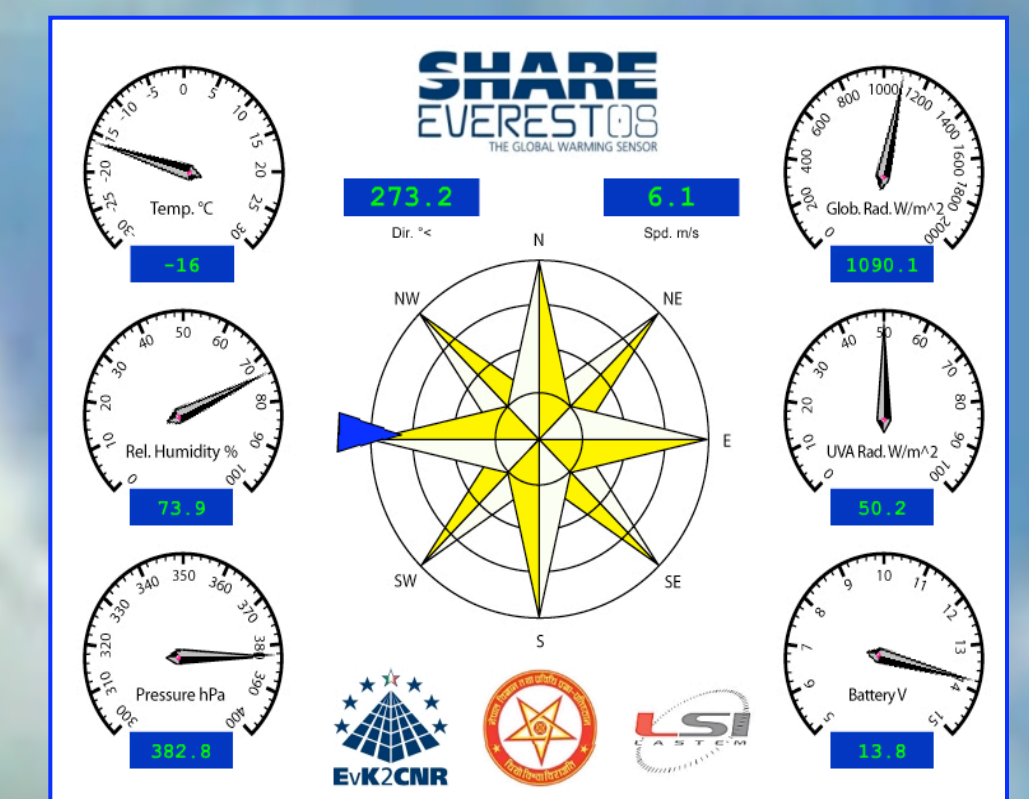
Mount Everest area (View from North)



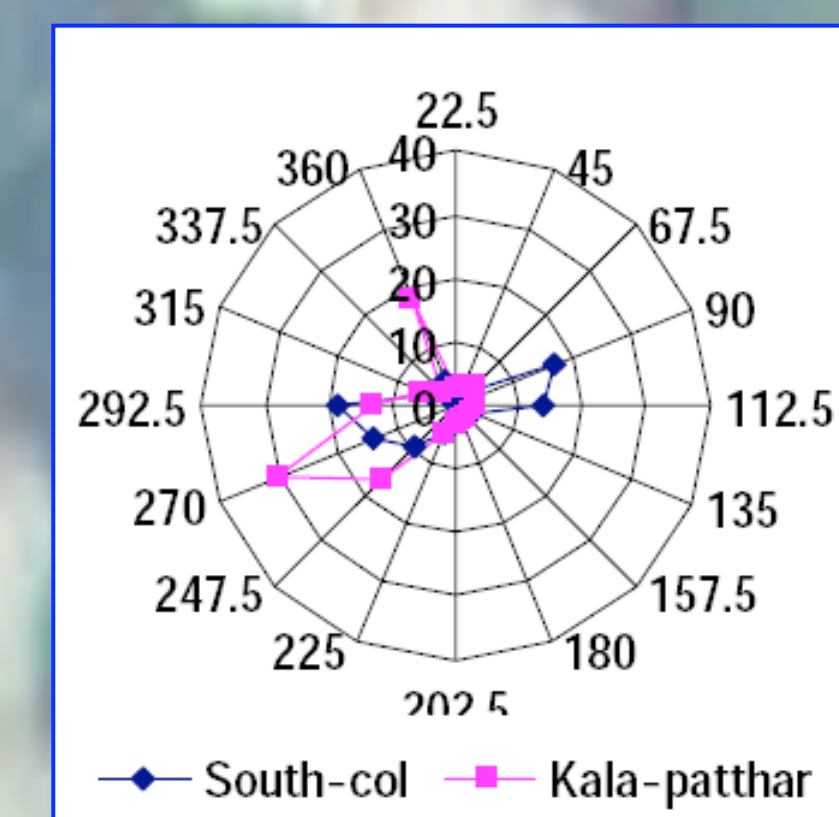
AWS Kala - Patthar (5,585 m a.s.l.)



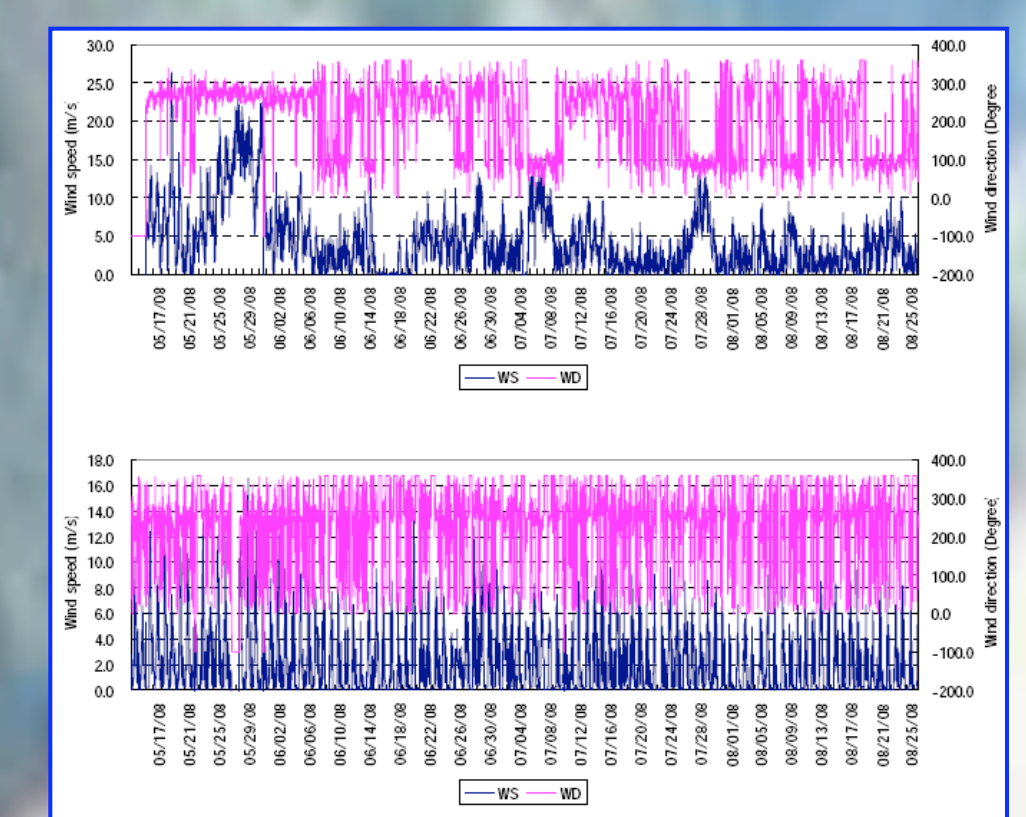
South Col, March 15, 2008



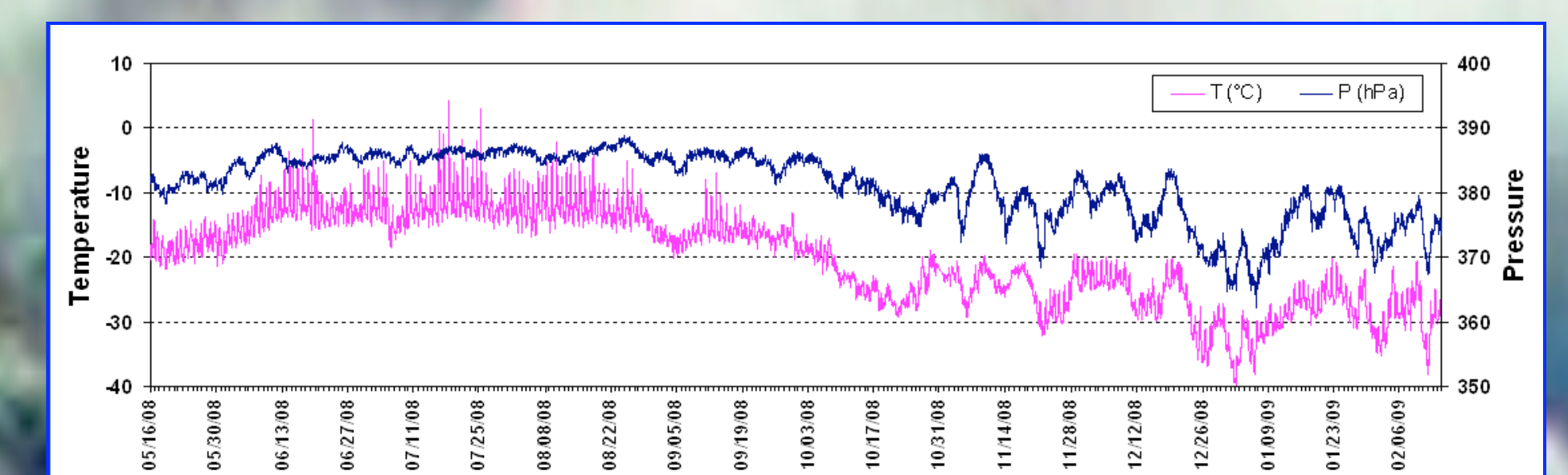
View of data in real time at the web site <http://share-everest.org/SouthColMeteoDataConverted/sensorPanel.html>



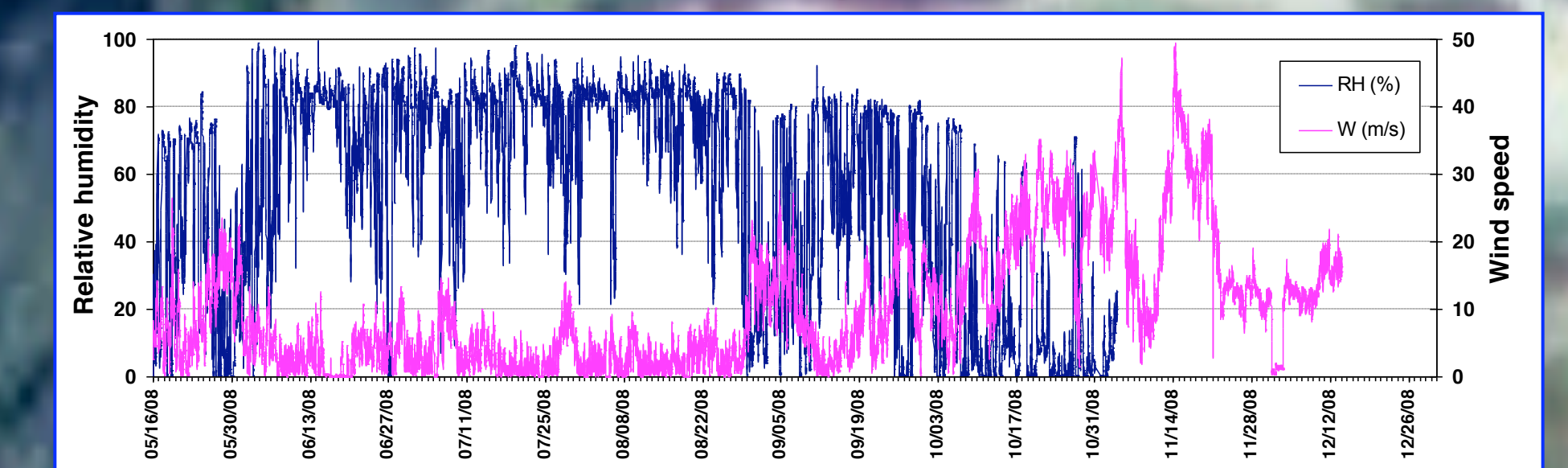
## Wind



## Temperature vs Pressure

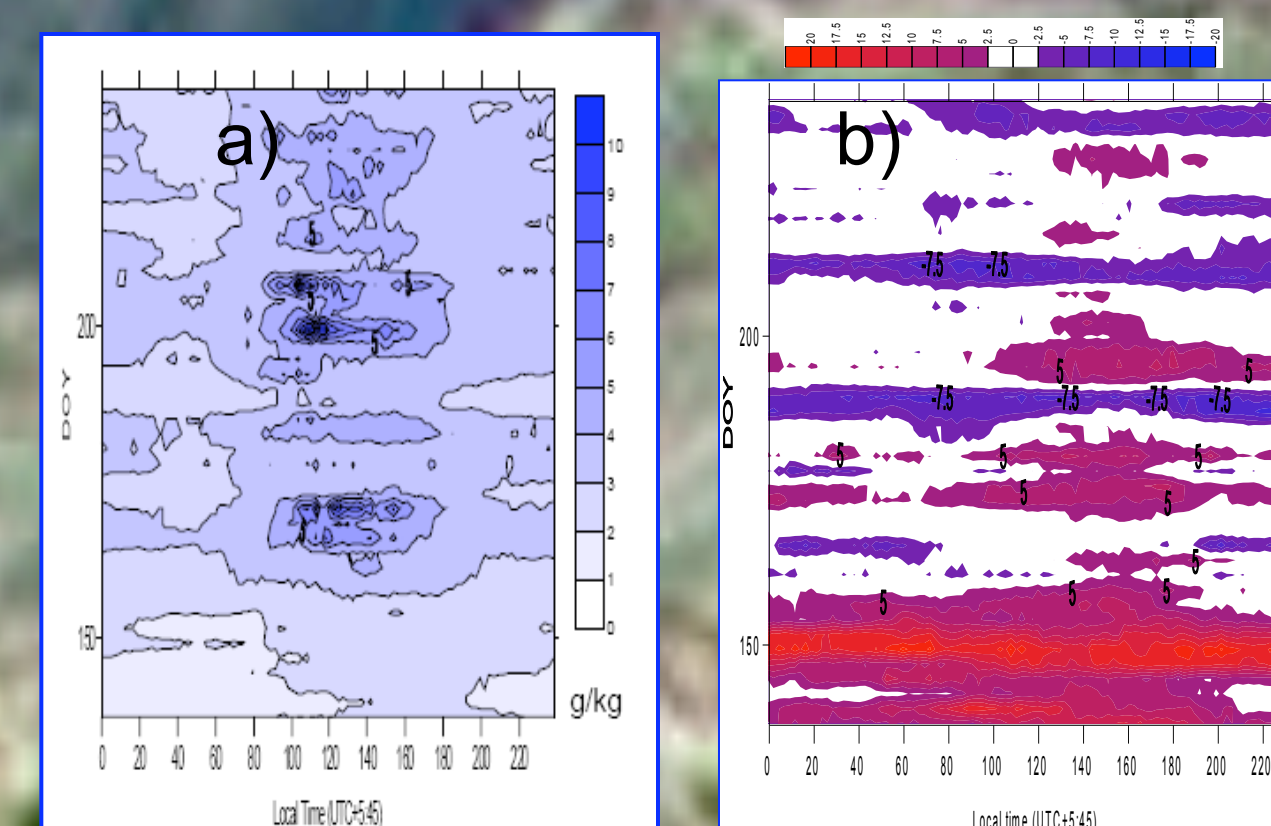


## Relative Humidity vs Wind Speed

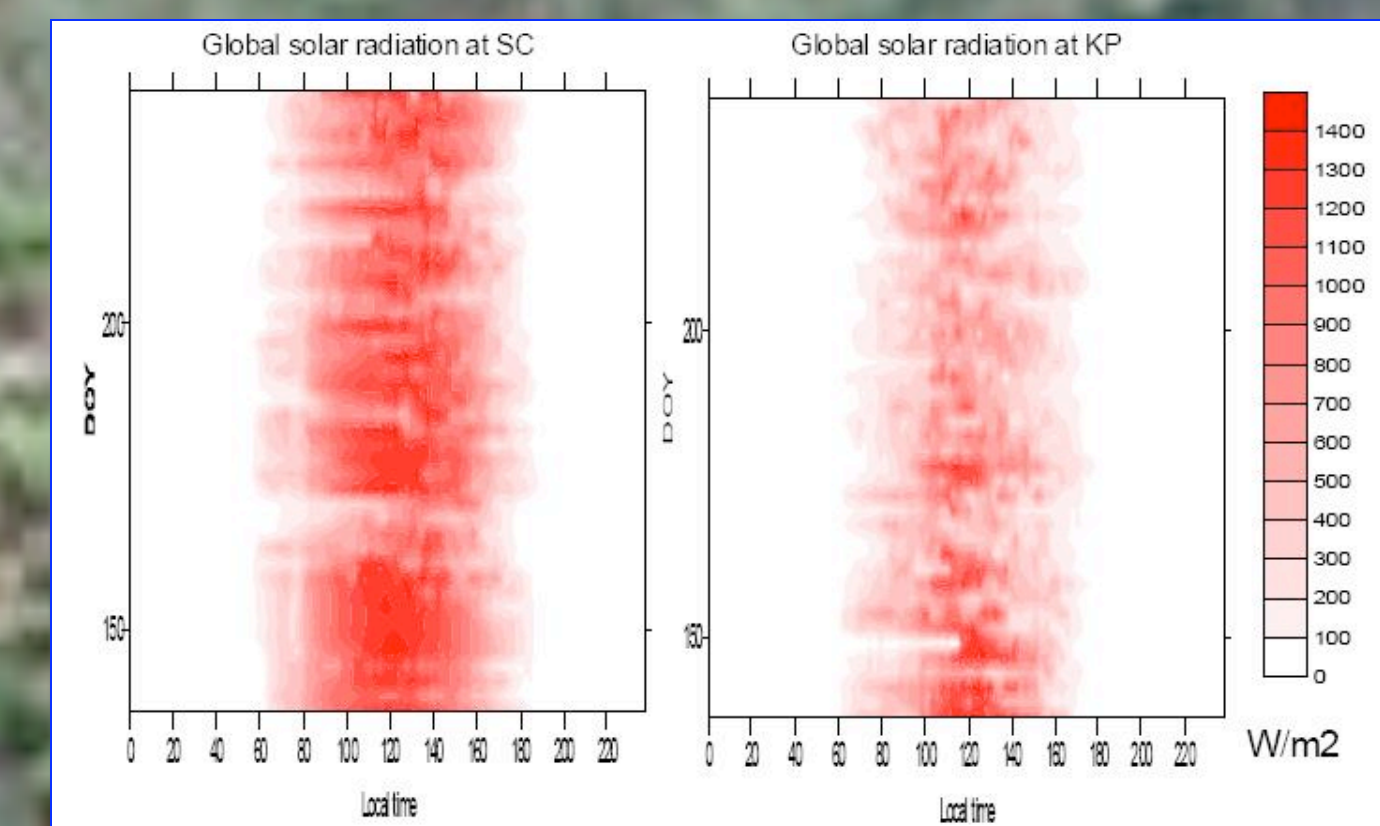


## Diurnal change at SC

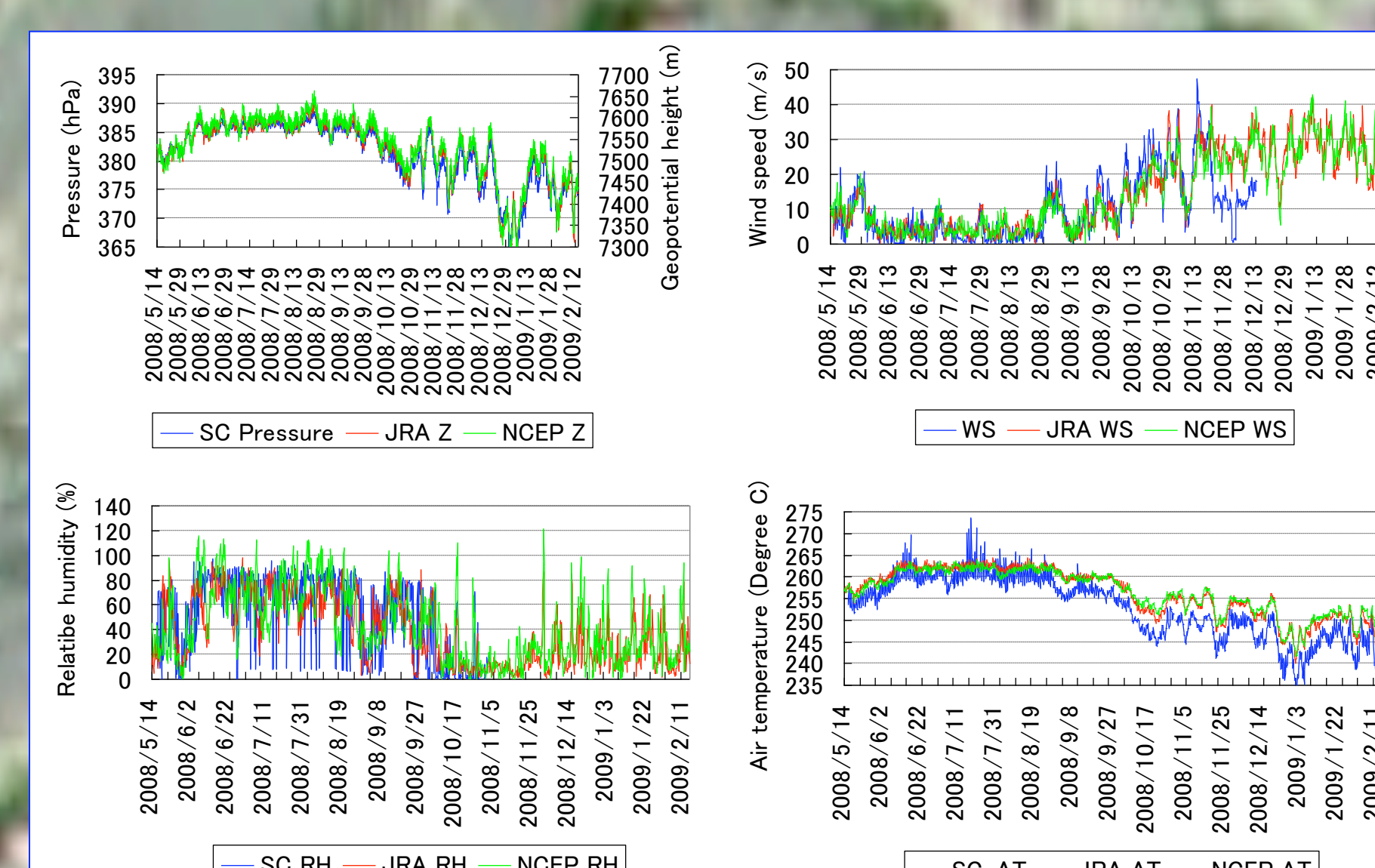
### a) specific humidity and b) U-wind



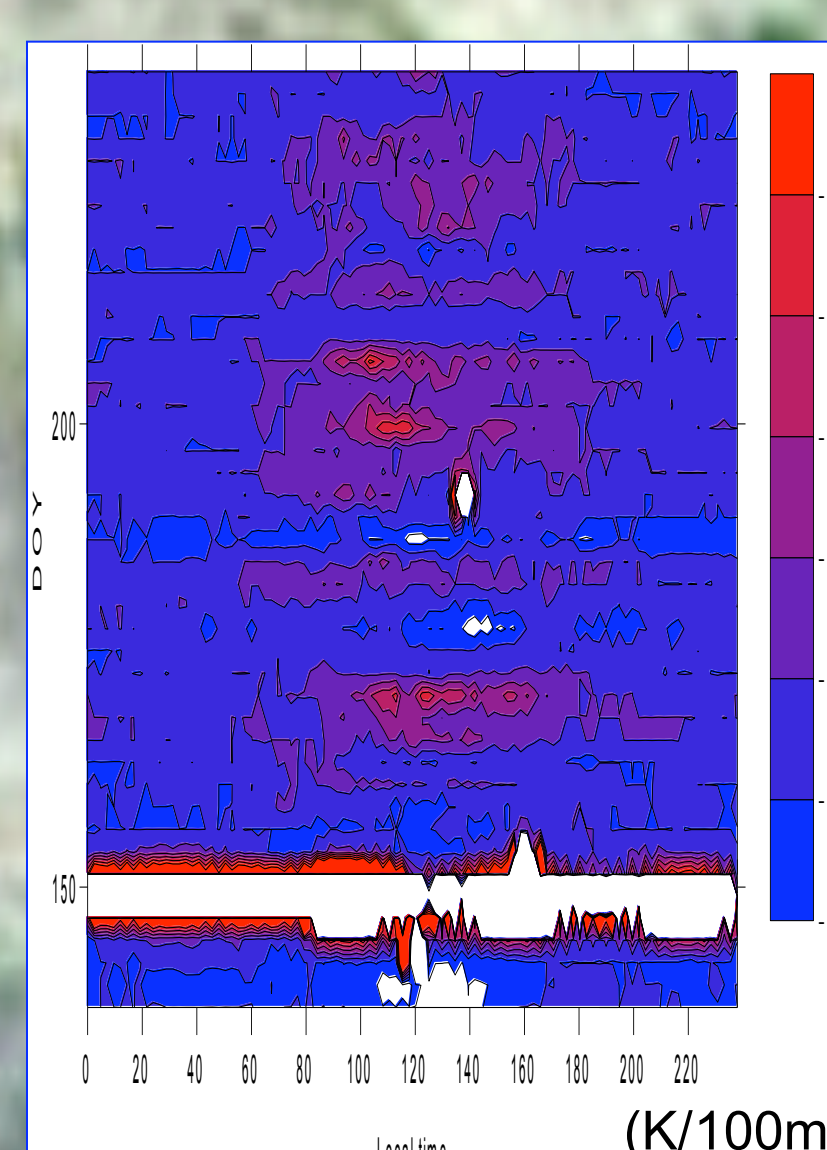
## Global solar radiation



## Comparison between the in-situ data and objective analysis (NCAR and JRA) obtained at a nearest point of the SC.



## Lapse rate change between SC and KP



## ACKNOWLEDGMENTS

The project is carried out within the framework of the Ev-K2-CNR Project in collaboration with the Nepal Academy of Science and Technology as foreseen by the Memorandum of Understanding between Nepal and Italy, and thanks to contributions from the Italian National Research Council and the Italian Ministry of Foreign Affairs.

Correspondence to: [elisa.vuillermoz@evk2cnr.org](mailto:elisa.vuillermoz@evk2cnr.org)